

GEAR OIL.
Specifically for
powersports which resists
thinning more consistent
than. This fluid is less slippery
than others and offers
better protection.

FOR POWERSPORTS.
Provides excellent protection /
resists weather / Low fluid
consumption / Compatible with conventional



V-TWIN
PRIMARY CASE

1 U.S. Quart - 946 mL

RED LINE[®] OIL



SINCE **1979**

RED LINE OIL



In 1979, Red Line Synthetic Oil began creating lubricants for the racing industry. Today, we manufacture more than 100 quality products, including motor oils, gear oils, assembly lubes, fuel additives and our popular Water Wetter® cooling additive for the automotive, motorcycle, marine and industrial markets.



RED LINE
SYNTHETIC OIL

V-TWIN
PRIMARY GEAR OIL

1 U.S. Quart - 946 ml

- POWERSPORTS MOTOR OIL ■
- POWERSPORTS GEAR OIL ■
- POWERPACKS® ■
- POWERSPORTS 2-STROKE OIL ■
- POWERSPORTS CHAIN LUBE ■
- POWERSPORTS COOLING SYSTEM ■
- SUSPENSION FLUIDS ■
- BRAKE FLUIDS ■

POWERSPORTS

Made for power. Obviously. Red Line motorcycle and Powersports lubricants are designed to resist the shearing action and keep the viscosity within the desired specification while providing superior wear protection.

Full-synthetic with PAO and Ester base stocks and 2200 ppm of ZDDP for antiwear

Products include a unique agent that lowers temperatures by reducing or eliminating bubbles or vapor barrier that form on hot metal surfaces

Full-synthetic formulations specific to the latest V-Twins, UTVs, ATVs and Sportbikes

Six different lubricants can be used as a pre-mix or in oil-injected systems

Engineered with ShockProof technology. You know it's going to be good!

Kits for your powersports needs with enough product for a change and goodies to boot



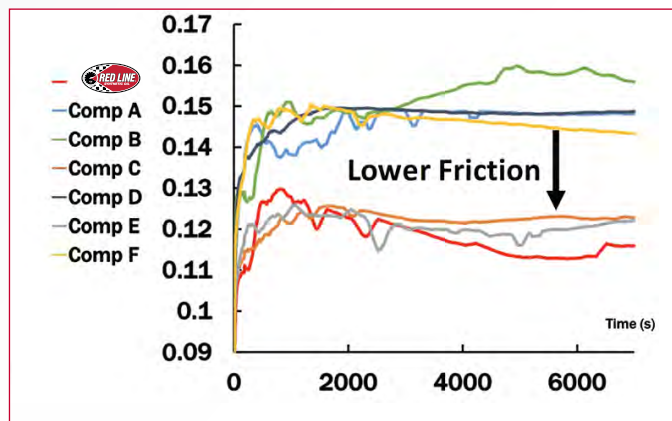
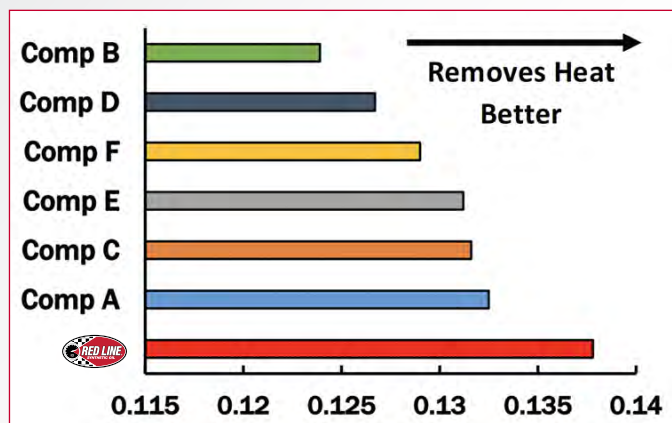
WINNING FORMULA

10W40 MOTORCYCLE OIL

QT 42404

RUN COOLER + LAST LONGER

- The highest thermal conductivity when compared to the competition
- The lowest frictional coefficient when compared to competitor oils for longer protection
- 2x more zinc when compared to competitor oils, resulting in more protection under full engine load



“ With our return to the 250cc class in 2022 with high-revving Honda CRF250R motors that build lots of heat, it was critical that the team use only the best oil to protect our race engines. Red Line proved to be the very best choice as our engines ran in the safe zone at every race. ”

TONY ALESSI - Team Manager MCR Honda Racing



POWERSPORTS

Customer Reviews **amazon** ★★★★★ 4.9 out of 5

★★★★★

One of the best performing motor oils on the market today!

Tom K.

★★★★★

This is without a doubt the BEST synthetic oil you can put in your Harley. My Street Glide runs smoother, quieter and cooler. I'm very happy with their products.

Jackson.

★★★★★

RedLine is one of the very few that makes the oil in that viscosity. Therefore, it is a must, if you want to run a great oil in your modern Honda, etc

NYS.

★★★★★

Had used Harley Davidson Syn 3 for over 20 years, but decided to try Red Line in all three holes. I immediatley notices a reduction of noise and shifting ease.

Norse.



POWERSPORTS MOTOR OIL

CLICK EACH PRODUCT FOR APPLICATIONS



15W50 POWERSPORTS OIL

QT **42104**

Maintain the smooth ride. Your four-stroke dirt bike is asking for it.



0W40 POWERSPORTS OIL

QT **42204**

Four-stroke Snowmobiles now feel as special as everyone else.



10W50 POWERSPORTS OIL

QT **42604**

Your UTV wants gnarly protection, but cold-flow sensitivity. This one is listening.



20W50 MOTORCYCLE OIL

QT **42504**

Your Harley wants better raw materials and more ZDDP than other brands offer.



20W60 MOTORCYCLE OIL

QT **12604**

Not for every bike, for wide clearances and performance for a wide range of extreme temps.



10W30 MOTORCYCLE OIL

QT **42304**

Check your manual, your bike may recommend a product this light and stable.



10W40 MOTORCYCLE OIL

QT **42404**

The go-to viscosity for sportsbikes with more antiwear than any other on the market.

POWERSPORTS GEAR OIL

CLICK EACH PRODUCT FOR APPLICATIONS

POWERSPORTS



V-TWIN TRANSMISSION OIL with SHOCKPROOF®

QT **42804**

ShockProof® technology to make a big impact against big impacts.



V-TWIN PRIMARY CASE OIL

QT **42904**

Everyone thinks about the transmission side, but the clutch and primary chain need love, too.



UTV/ATV GEARCASE OIL

QT **43704**

Famed Red Line gear protection, but specifically for your Side-by-Side.



80W MOTORCYCLE GEAR OIL with SHOCKPROOF®

QT **42704**

Bringing Shockproof® technology for your 2 stroke dirt bikes.

POWERSPORTS ADDITIVES



COMPLETE FUEL SYSTEM CLEANER

4OZ **60102**

When is the last time you cleaned your fuel system?

BUILT FOR POWER.



The kit for your powersports needs with enough product for a change and goodies to boot.

POWERPACKS®

- Each kit has been tested for compatibility and includes enough fluid for a complete oil change
- Users must check vehicle specifications for capacity to ensure against overfilling, as full quarts may provide more product than necessary



V-TWIN 20W50 81235

- (5) QT 20W50 Motorcycle Oil
- (1) QT V-Twin Transmission Oil with ShockProof®
- (1) QT Primary Chain Case Oil
- (1) Complete Fuel System Cleaner for Powersports
- (1) funnel
- Sticker Kit & Red Line Hat



V-TWIN 20W60 81235

- (5) QT 20W60 Motorcycle Oil
- (1) QT V-Twin Transmission Oil with ShockProof®
- (1) QT Primary Chain Case Oil
- (1) Complete Fuel System Cleaner for Powersports
- (1) funnel
- Sticker Kit & Red Line Hat



UTV/ATV 81235

- (3) QT 10W50 Powersports Motor oil
- (2) QT UTV/ATV Gearcase Oil
- (1) Complete Fuel System Cleaner for Powersports
- (1) WaterWetter®
- (1) funnel
- Red Line hat

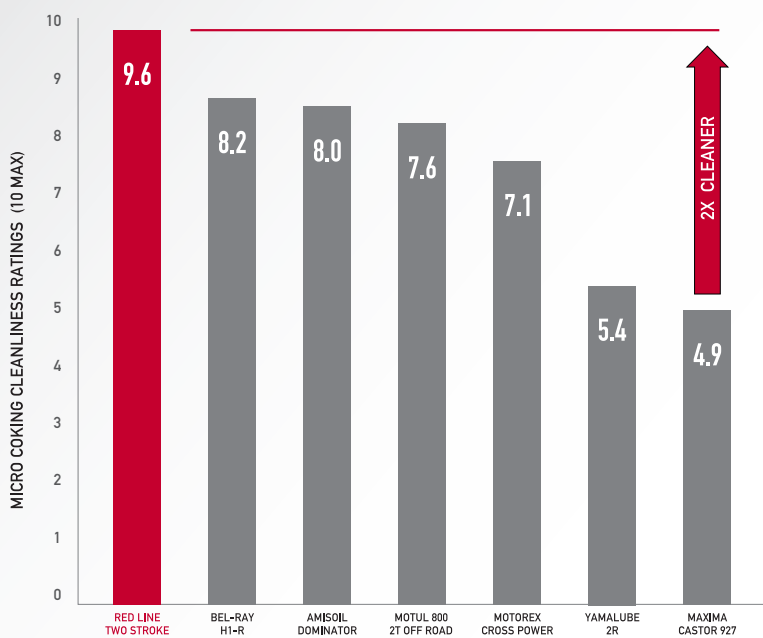
CLEAN HORSEPOWER

TWO-STROKE RACING OIL [⚠]

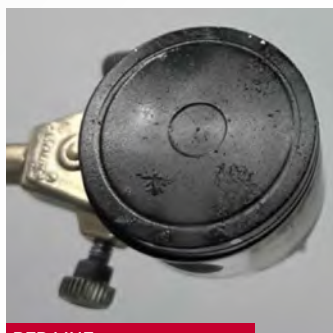
16oz **40603** / GAL **40605** / 5 GAL PAIL **40606** / 55 GAL DRUM **40608**

TEAM TESTED

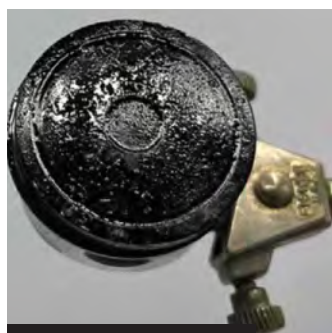
- Engineered with our best base oils, resulting in more protection
- Proven 3-5% horsepower gains during long duration dyno runs when compared to competitors oil
- Dramatically cleaner results in Micro Coke Testing when compared to competitors oil



TEST PISTON AFTER 3 HOURS



RED LINE



MAXIMA CASTOR 927

“ This is the cleanest two stroke oil we have ever tested.
I was blown away by these results. ”

Senior Scientist at World's Leading Additive Supplier



WARNING. This product can expose you to chemicals including Naphthalene (91-20-3) which is known to the State of California to cause cancer. For more information go to www.P65Warnings.ca.gov.

POWERSPORTS 2-STROKE OILS

CLICK EACH PRODUCT FOR APPLICATIONS

POWERSPORTS



TWO-STROKE ALLSPORT OIL ¹

16oz **40803** / GAL **40805** / 5 GAL PAIL **40806** / 55 GAL DRUM **40808**

Additives to prevent ring sticking, scuff protection, cleaner pistons and exhaust ports.



TWO-STROKE RACING OIL ¹

16oz **40603** / GAL **40605** / 5 GAL PAIL **40606** / 55 GAL DRUM **40608**

This was our first product. It still leads its segment in performance.



TWO-STROKE KART OIL ¹

16oz **40403** / GAL **40405** / 5 GAL PAIL **40406** / 55 GAL DRUM **40408**

The fastest growing product in karting, spec in many series.



TWO-STROKE WATERCRAFT ¹

GAL **40705** / 5 GAL PAIL **40706** / 55 GAL DRUM **40708**

Stand-up skis are back! This is the product to be legal on the lake.



TWO-STROKE SNOWMOBILE OIL ¹

GAL **41005** / 55 GAL DRUM **41008**

When the conditions get cold, this keeps flowing through your sled's injector.



TWO-STROKE SMOKELESS OIL ¹

16oz **40903** / GAL **40905** / 5 GAL PAIL **40906** / 55 GAL DRUM **40908**

Check your manual, your bike may recommend a product this light and stable.



WARNING. This product can expose you to chemicals including Naphthalene (91-20-3) which is known to the State of California to cause cancer. For more information go to www.P65Warnings.ca.gov.

WINNING FORMULA

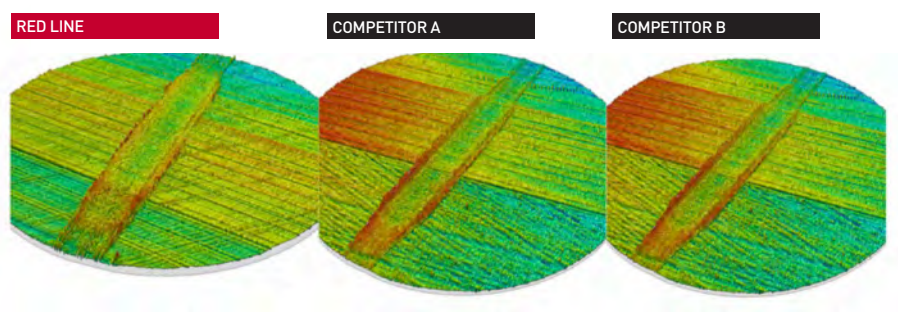
CHAIN LUBE with SHOCKPROOF®

13oz 43103

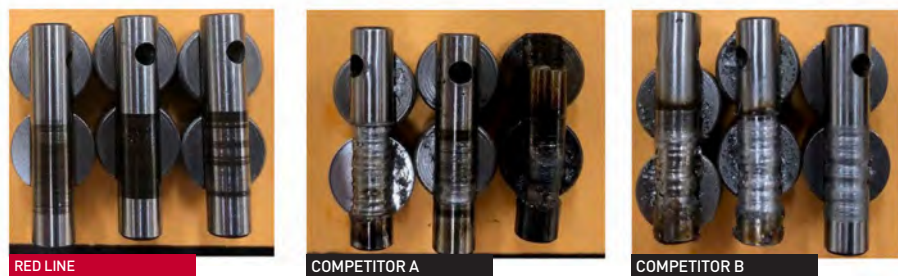
You Know It's Going To Be Good!

- Red Line Chain Lube has the highest protection against extreme pressure and wear
- Provides smooth, quiet operation and reduced drive-chain drag for maximum power delivery
- Red Line activates at the lowest temperature and maintained the thickest film
- Red Line maintained the thickest film at constant load and temperature
- Red Line Chain Lube has the highest concentration of anti-wear and extreme pressure additives

Friction promotes wear. R&D testing showed Red Line Chain Lube prevents friction by forming a protective layer on the metal surface. Red Line Chain Lube's protective layer formed the fastest and lasted the longest. Images of the metal surface after the friction test show more wear (larger scar) for the two competitors tested when compared to Red Line Chain Lube.



The HFRR experiments performed on the three chain lubricants tested.



COOLING SYSTEM



SUPERCOOL® EXTREME¹

1/2 GAL 80205

Formerly known as Supercool® With WaterWetter®. Same formula, new name and look.

- Convenient, pre-mixed coolant for motorcycles, ATVs, karts etc. - pour and go
- Blended with purified, deionized water and proper WaterWetter percentage
- Reduces rust, corrosion and electrolysis, cleans and lubricates water pump seals
- Compatible with all antifreeze and coolant
- Satisfies ASTM D2570 and ASTM D1384 corrosion tests for glycol-based antifreezes
- Contains no ethylene glycol

SUPERCOOL® CONCENTRATE²

1/2 GAL 81235

Antifreeze/coolant concentrate fortified with WaterWetter® technology for superior protection and cooling.



- Enhances heat transfer, reducing operating temperatures by up to 20°F
- Compatible with gas and diesel engines
- Safe for cast iron, aluminum and brass systems
- Compatible with all antifreeze and coolant
- Maximizes cooling system performance with superior protection against cavitation corrosion/erosion
- FOR ALL 2- & 4-STROKE ENGINES / ANY COOLANT COLOR: Motorcycles, Side-by-Sides, ATVs /UTVs and Snowmobiles

SUPERCOOL® BOILGUARD²

1/2 GAL 81235

50/50 prediluted antifreeze/coolant fortified with WaterWetter® technology



- Maximizes cooling system performance with superior protection against cavitation corrosion/erosion
- Enhances heat transfer, reducing operating temperatures by up to 20°F
- Compatible with gas and diesel engines
- Safe for cast iron, aluminum and brass systems
- FOR ALL 2- & 4-STROKE ENGINES / ANY COOLANT COLOR: Motorcycles, Side-by-Sides, ATVs /UTVs and Snowmobiles



¹ **WARNING.** This product can expose you to chemicals including o-Phenylphenol (CASRN 90-43-7) which is known to the State of California to cause birth defects or other reproductive harm. For more information go to www.P65Warnings.ca.gov.



² **WARNING.** This product can expose you to chemicals including Ethylene glycol (CASRN 107-21-1) which is known to the State of California to cause birth defects or other reproductive harm. For more information go to www.P65Warnings.ca.gov.

SUSPENSION FLUIDS

CLICK EACH PRODUCT FOR APPLICATIONS



POWERSPORTS

LIKEWATER®

16oz **91102** / 5 GAL PAIL **91106** / 55 GAL DRUM **91108**

No one builds a lighter product. Hence the name.

EXTRALIGHT® 2.5WT

16oz **91112** / 5 GAL PAIL **91116** / 55 GAL DRUM **91118**

High-end dampers feature small passages and need this thin fluid.

LIGHTWEIGHT® 5WT

16oz **91112** / 5 GAL PAIL **91116** / 55 GAL DRUM **91118**

Your 7.5WT fork oil is probably shearing down to where this 5WT lives.

MEDIUM WEIGHT® 10WT

16oz **91132** / 5 GAL PAIL **91136** / 55 GAL DRUM **91138**

More stable replacement fluid for twin-tube racing shock absorbers like Pro Shocks, Carrera and QA1

HEAVYWEIGHT® 30WT

16oz **91142** / 5 GAL PAIL **91146** / 55 GAL DRUM **91148**

Shock valving on heavy motorcycles need more viscosity.

BRAKE FLUIDS

RL-600 DOT 4 BRAKE FLUID

500mL **90404**

On the track or on the street this one delivers a solid pedal or lever.

- Typical Dry Boiling Point: 601°F (316°C)
- Typical Wet Boiling Point: 394°F (201°C)
- Engineered to maintain viscosity, lubricity and compressibility at extreme temperatures to help safeguard against brake fade and vapor lock in racing, performance and street applications
- Blends with and meets specification of DOT 4, however blending may compromise exceptional performance
- Do not mix with other brake fluids
- RL-600 conforms to and exceeds current U.S FMVSS No.116 DOT 4 specification



RL-700 RACING DOT 4 RACING BRAKE FLUID

500mL **90405**

Engineered for racing and high temp systems.

- Typical Dry Boiling Point: 635°F (335°C)
- Typical Wet Boiling Point: 401°F (205°C)
- Specially formulated to provide the highest performance under racing conditions where braking systems operate at very high temperatures
- For best results, bleed the braking system with fresh fluid before each race, specifically if the brakes are excessively hot and/ or the conditions are humid
- Do not mix with other brake fluids, otherwise outstanding performance may be compromised
- RL-700 conforms to and exceeds U.S FMVSS No.116 DOT 4
- Exceptionally low compressibility
- RL-700 has the highest boiling point of all road legal brake fluids ever produced



LUBES / GREASES



CV-2¹

HIGH-PERFORMANCE EXTREME PRESSURE GREASE

14oz JAR **80401** / 14oz TUBE **80402** / 35lb PAIL **80406**

Crazy-good protection at extreme temps, extreme pressure .

- Outperforms the best conventional or synthetic greases and lubes
- Withstands extreme temperature and pressure in wheel bearings, U-joints and high-angle CV Joints
- Excellent high-temp stability, extreme-pressure protection and water resistance
- Used in a variety of applications with operating temps from -100°F to 500°F
- Strong resistance to oxidation and corrosion, low evaporation and oil separation with a minimum effect on rubber seals
- Contains an organic moly for chassis lubrication and high temp/high speed industrial equipment
- Synthetic fluidity allows increases in bearing life up to 200%
- Will darken after high-temp use-not detrimental to performance

ASSEMBLY LUBE

.75oz **80326** / 4oz JAR **80312** / 16oz JAR **80313** / 45lb PAIL **80316**

Made from motor oil components, so it blends in without contaminating.



- Prepares potential wear surface and prevents metal contact before adequate lubrication can be supplied
- Unlike other assembly lubes, Red Line's will not plug filters after initial engine start-up
- Provides 3x greater film strength than conventional black Molybdenum Disulfide greases
- Excellent rust and corrosion inhibitor, allows for long-term storage
- For use on camshafts, lifters, pushrods, piston skirts, bolt threads, main and rod bearings
- Do not use on exhaust bolts or other high temperature bolts which require an anti-seize
- Recommended and used by top camshaft and drivetrain manufacturers

LIQUID ASSEMBLY LUBE

12oz **80319**

Just like our famous Assembly Lube, but a bit easier to get into tough spots.



- New, convenient version of the chemistry used in our popular paste sold in tubs
- Prevents metal contact and wear before adequate lubrication can be supplied
- Unlike other assembly lubes, this product will not plug filters after initial engine start-up
- Provides 3x greater film strength than conventional black Molybdenum Disulfide greases
- Excellent rust and corrosion inhibitor, allowing for long-term storage of parts and internal engine components



WARNING. This product can expose you to chemicals including Quartz (14808-60-7) which is known to the State of California to cause cancer. For more information go to www.P65Warnings.ca.gov.

JOIN US!

#teamredlineoil

